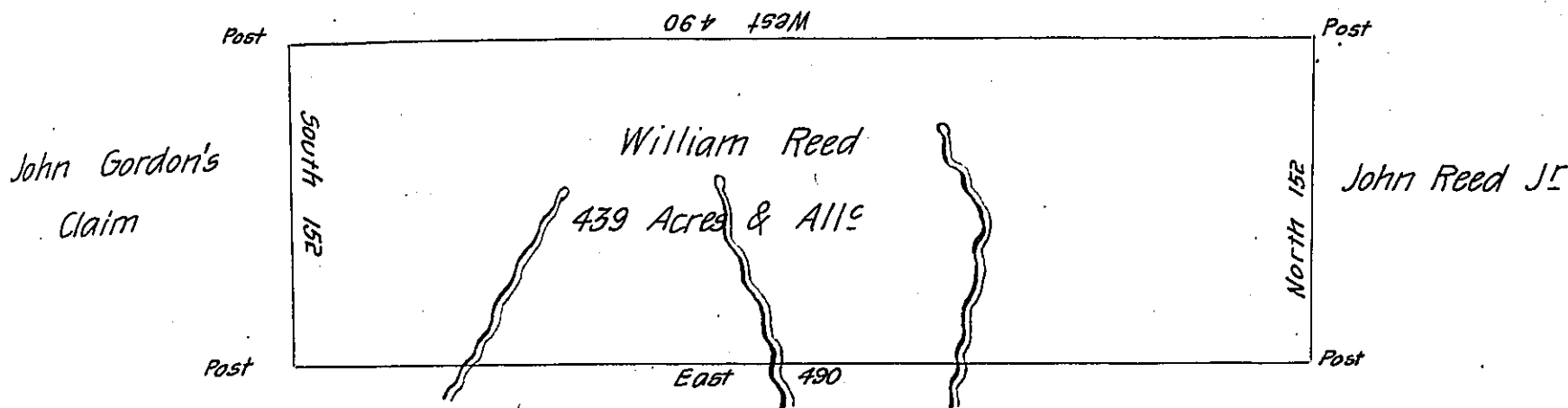


Walter Reed



Titus Reed

Situated on the Waters of Sidelinghill Creek in Colerain
 Township Bedford County Containing 439 Acres with the usual Allow-
 ance of Six P. Cent for Roads &c^a Surveyed for William Reed the
 8th day of October 1794 on Warrant dated the 21st February 1794

George Woods Jun^r D.S.

To Daniel Brodhead Esq^r

S. G.

Examined by me December 16th 1808

John Anderson

To Samuel Cochran Esq^r

Deputy Surveyor

Surveyor General

IN TESTIMONY that the above is a copy of the original remaining on file in
 the Department of Internal Affairs of Pennsylvania, made
 conformably to an Act of Assembly approved the 16th day of
 February, 1833, I have hereunto set my Hand and caused
 the Seal of said Department to be affixed at Harrisburg,
 this twenty third day of October 1906

Isaac D. Brown
 Secretary of Internal Affairs.